

# Common Stormwater Pollutants

Sacramento needs your help to prevent pollution at its source



## 1. PESTICIDES

Pesticides are toxic chemicals that are harmful to the watersheds and environment when not used or disposed of properly.



## 2. LITTER

By not disposing of your trash properly, it will eventually become litter and make its way into our storm drains and contaminate local and distant waterways.



## 3. MOTOR OIL

When oil leaks are not fixed, the toxic oil will find its way to our watershed, and often harms plants and animals it meets.



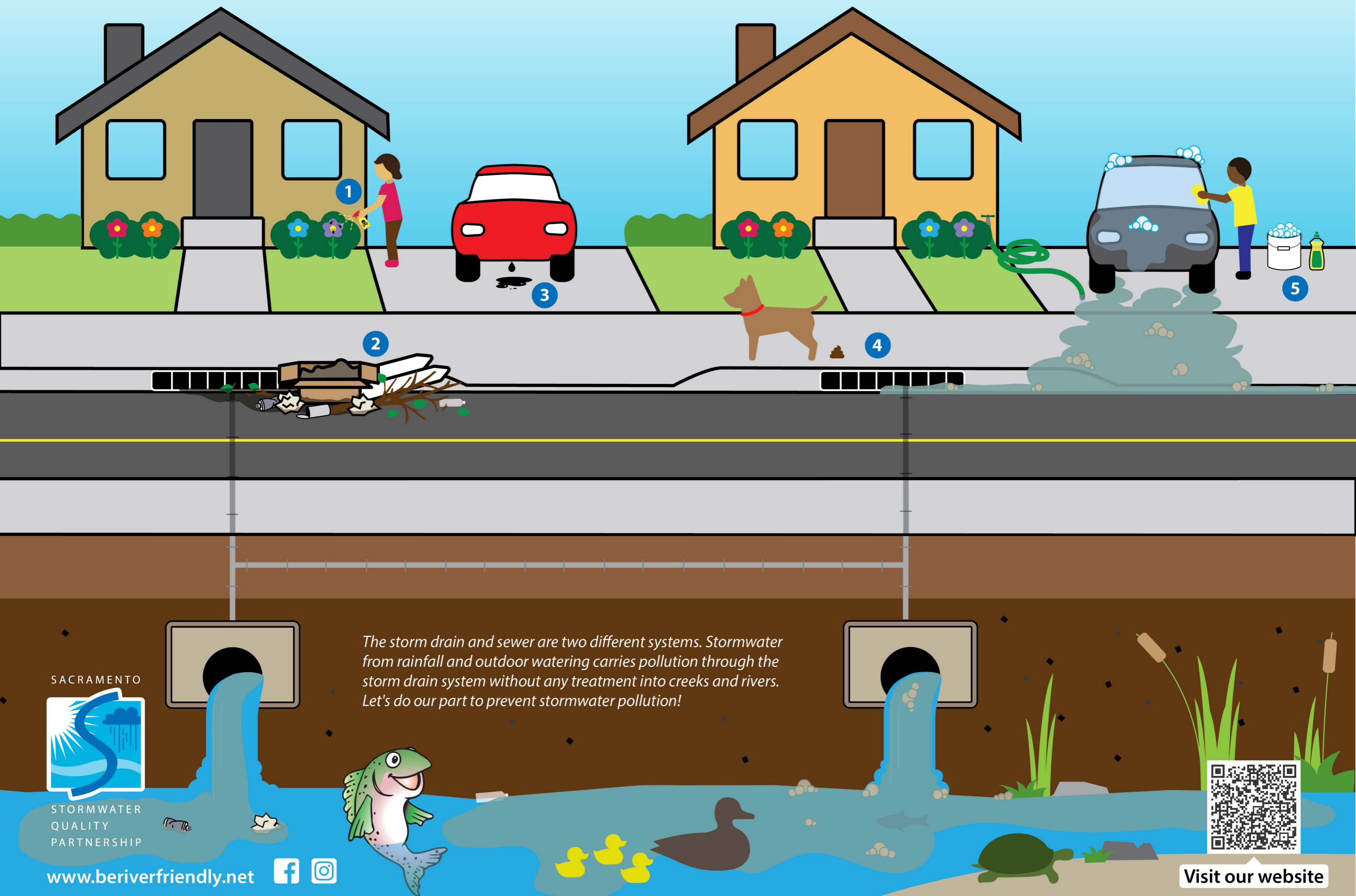
## 4. PET WASTE

Pet waste carries bacteria, viruses, and parasites to our water that can threaten the health of humans and wildlife.



## 5. SOAPS/DETERGENTS (from car wash)

Washing cars in our driveways creates soapy runoff that picks up pollutants and eventually makes its way to rivers untreated via storm drains.



SACRAMENTO



STORMWATER  
QUALITY  
PARTNERSHIP

[www.beriverfriendly.net](http://www.beriverfriendly.net)



Visit our website



# Actions for Clean Water

Sacramento needs your help to prevent pollution at its source



## 1. PESTICIDES

Use less toxic pesticides or add plants that attract lady bugs and other garden-friendly bugs. They will keep unwanted bugs under control. Consider hiring a GreenPro certified professional for pest solutions.



## 2. LITTER

Properly dispose of your rubbish in the right bin. Compost and place food scraps or green waste in the organics bin. When you travel tarp your load.



## 3. MOTOR OIL

When you discover you have an oil leak, get it fixed right away. In the meantime, put an oil pan with kitty litter under your car to absorb any drips.



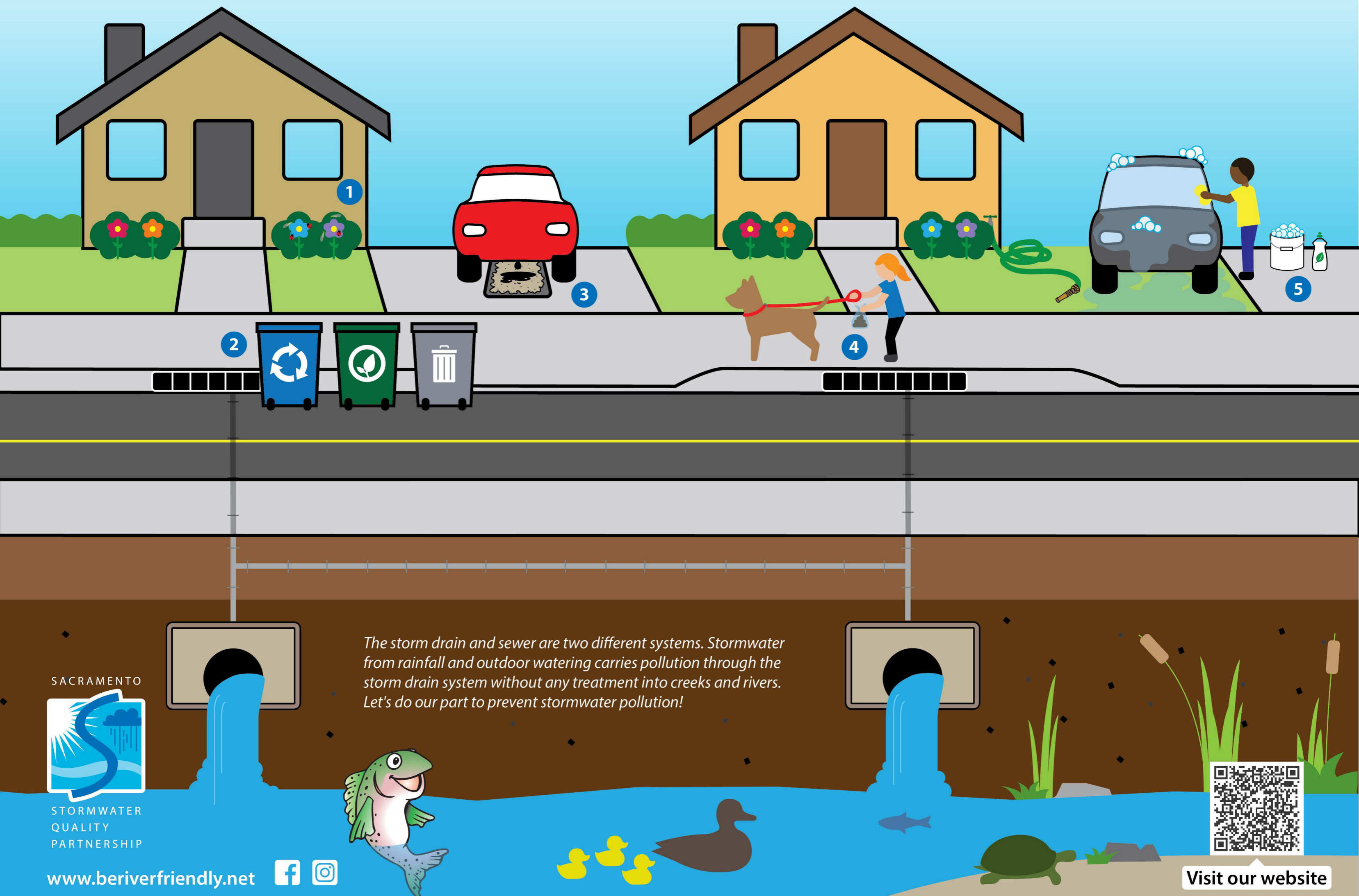
## 4. PET WASTE

Scoop the poop, bag it up, and toss it in the trash can. When you walk your pet, bring a pet waste bag!



## 5. SOAPS/DETERGENTS (from car wash)

If you wash your car at home, use a hose nozzle, check-out biodegradable soap made specifically for automotive parts, and move the car to your lawn to capture and filter the runoff.



The storm drain and sewer are two different systems. Stormwater from rainfall and outdoor watering carries pollution through the storm drain system without any treatment into creeks and rivers. Let's do our part to prevent stormwater pollution!

SACRAMENTO



STORMWATER  
QUALITY  
PARTNERSHIP

[www.beriverfriendly.net](http://www.beriverfriendly.net)



Visit our website