

Common Stormwater Pollutants

Sacramento needs your help to prevent pollution at its source



1. PESTICIDES

Pesticides are toxic chemicals that are harmful to the watersheds and environment when not used or disposed of properly.



2. LITTER

By not disposing of your trash properly, it will eventually become litter and make its way into our storm drains and contaminate local and distant waterways.



3. MOTOR OIL

When oil leaks are not fixed, the toxic oil will find its way to our watershed, and often harms plants and animals it meets.



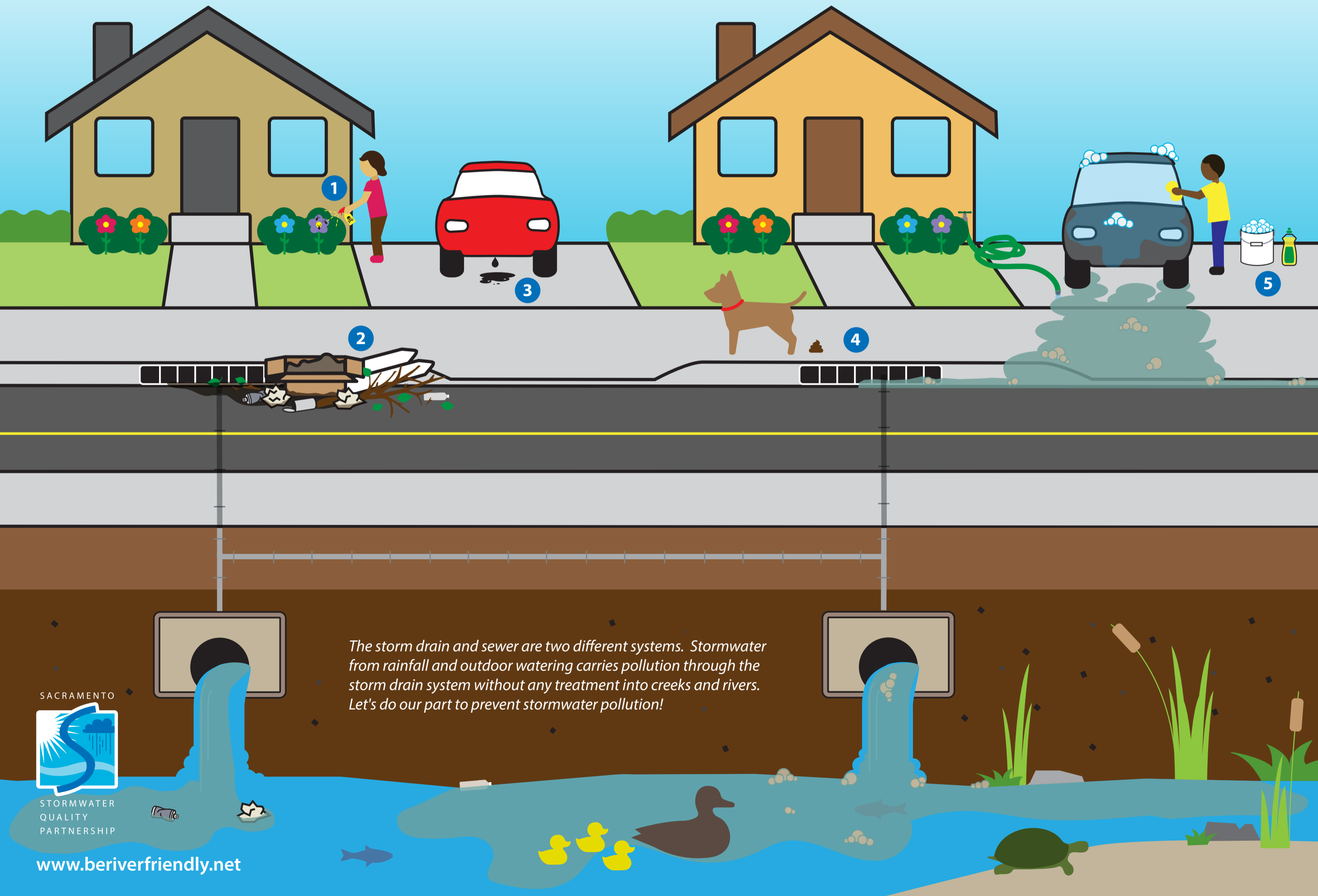
4. PET WASTE

Pet waste carries bacteria, viruses, and parasites to our water that can threaten the health of humans and wildlife.



5. SOAPS/DETERGENTS (from car wash)

Washing cars in our driveways creates soapy runoff that picks up pollutants and eventually makes its way to rivers untreated via storm drains.



The storm drain and sewer are two different systems. Stormwater from rainfall and outdoor watering carries pollution through the storm drain system without any treatment into creeks and rivers. Let's do our part to prevent stormwater pollution!

SACRAMENTO



STORMWATER
QUALITY
PARTNERSHIP

www.beriverfriendly.net